

Working for You...
AND THE STATE OF HAWAII

Senator Donovan M. Dela Cruz

HAWAII STATE SENATE - DISTRICT 22
Mililani Mauka • Wahiawā • Whitmore Village • Waip'ō Acres • Wheeler • Poamoho



March 2016

Majority Whip

Vice Chair: Committee on Ways and Means

Member: Committees on Education; Government Operations; Water, Land and Agriculture.



You can view Senator Dela Cruz's senate website at www.capitol.hawaii.gov.



Subscribe to our E-Newsletter by emailing delacruz2@capitol.hawaii.gov.

Dane Wicker, Legislative Aide
(808) 586-7108
d.wicker@capitol.hawaii.gov

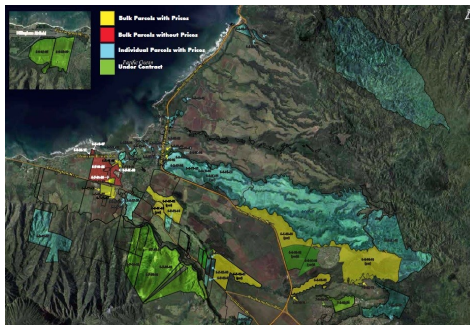
David Cho, Legislative Aide
(808) 586-6697
d.cho@capitol.hawaii.gov

Dot Fujinaga, Office Manager
(808) 586-6090
d.fujinaga@capitol.hawaii.gov

Hawaii State Senate
State Capitol
415 S. Beretania St., Rm. 202
Honolulu, HI 96813
P: 808-586-6090
F: 808-586-6091

Email:
sendelacruz@capitol.hawaii.gov

LAND EXCHANGE BILL TO ACQUIRE AG LAND MOVES FORWARD



The House Committee on Water & Land voted out [SB1374](#) on Monday, Mar. 14th and now the bill heads to the Committee on Agriculture for further consideration. Along with my Senate colleagues, I introduced this bill last session as we acknowledged the urgency to purchase prime agricultural lands for food production.

Agriculture was the economic mainstay of the central Oahu plains not too long ago. This industry, specifically sugar cane and pineapple, had a greater stake in how and where communities grow. However, in 1996, the Waialua Sugar Mill closed, and in 2008, Del Monte fresh produce ended operations. What remains are several thousand acres of agricultural lands that is in diversified agricultural production on short-term leases or left fallow.

Dole Food Company, Inc., has listed over eighteen thousand acres of land for sale on Oahu between the area of central Oahu and the north shore of which several thousand acres are prime agricultural lands. The estimated cost to buy all the prime agricultural land is between \$75 - \$150 million. An option to acquire these lands would be through a land exchange.

Over the past years, the State has made it a priority to shift toward sustainability in agriculture and decrease our food imports. The state has a tremendous opportunity to acquire prime agriculture land for our local agriculture industry.

I ask for your support through the remainder of this session by submitting testimony on [SB1374](#) at capitol.hawaii.gov and forwarding this information to your family and friends.

District 22 Capital Improvement Projects

I am pleased to updated you on recent projects that were awarded funding:

Wahiawa Middle School:

- \$50,160 to replace gutters

To view a list of all CIP projects for District 22, please go to www.capitol.hawaii.gov and click on my member's page.

DEPARTMENT OF EDUCATION

LEILEHUA COMPLEX REPAIR AND MAINTENANCE PRIORITY LIST FOR FY 2016-2017

SCHOOL	PROJECT	(\$)
Helemano Elementary	G Reroof	\$330,000
	Various Portables Install Security Screens	\$30,000
	02 Seal Coat Parking Lot	\$75,000
	VV Replace Irrigation System	\$35,000
	A Repaint Exterior	\$50,000
Iliahi Elementary	Campus Replace Fencing	\$130,000
	C Recoat & Restripe Play Area	\$60,000
	A Reroof	\$252,000
	D Drainage Improvements	\$192,000
Kaala Elementary	01 Resurface Parking Lot	\$300,000
	A Electrical Improvements	\$48,000
	D Electrical Improvements	\$100,000
Wahiawa Elementary	H Reroof	\$163,000
	A Replace Flooring	\$63,000
	02 Resurface Driveway & Parking	\$300,000
	D Reroof	\$204,000
	C Reroof	\$204,000
Wheeler Elementary	Campus Replace Waterlines	\$400,000
	02 Install Cattle Gates	\$22,000
	E Building Assessment	\$10,000
	G Relocate Hose Bibs	\$12,000
	Campus Replace Fencing Phase I	\$90,000
Wahiawa Middle	J Admin Interior Renovations	\$130,000
	I Replace Library Windows	\$95,000
	E Reroof	\$533,000
	03 Resurface Playcourt	\$320,000
Wahiawa Storefront School	Campus Misc Repairs	\$50,000
Wheeler Middle	I Reroof	\$128,000
	H Rebuild Freezer	\$85,000
	02 Resurface Parking	\$211,000
	A Replace Library A/C	\$66,000
Leilehua High	O Reroof	\$188,000
	X Reroof	\$229,000
	Reroof 3 Portables	\$65,000
	04 Resurface Driveway & Parking	\$346,000
TOTAL		\$5,516,000